



**CHICAGOLAND RISK FORUM**  
CHICAGO & MID-ILLINOIS RIMS CHAPTERS

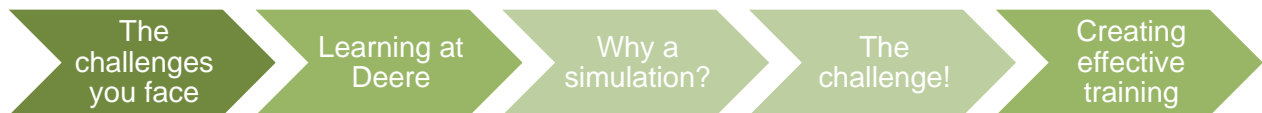
**EMPOWERING RISK MANAGEMENT 2018**

## Building Resiliency through a Virtual Simulation

Go to:  
[PollEv.com/Resiliency](http://PollEv.com/Resiliency)

[WWW.CHICAGOLANDRISKFORUM.ORG](http://WWW.CHICAGOLANDRISKFORUM.ORG)

## Today's session



## Human element of resiliency!



## Learning at Deere & Company



**Dan Brudos**  
Manager, Risk Analysis

## Loss Prevention Learning at Deere & Co.

- Types of loss prevention training
- Challenges faced with training programs
- Tips for success with training implementation

## Types of loss prevention training

- Online training
  - structured
  - webinars
- On-site training
  - Field engineer led at a location (informal)
  - Subject matter expert led at the enterprise level (formal)

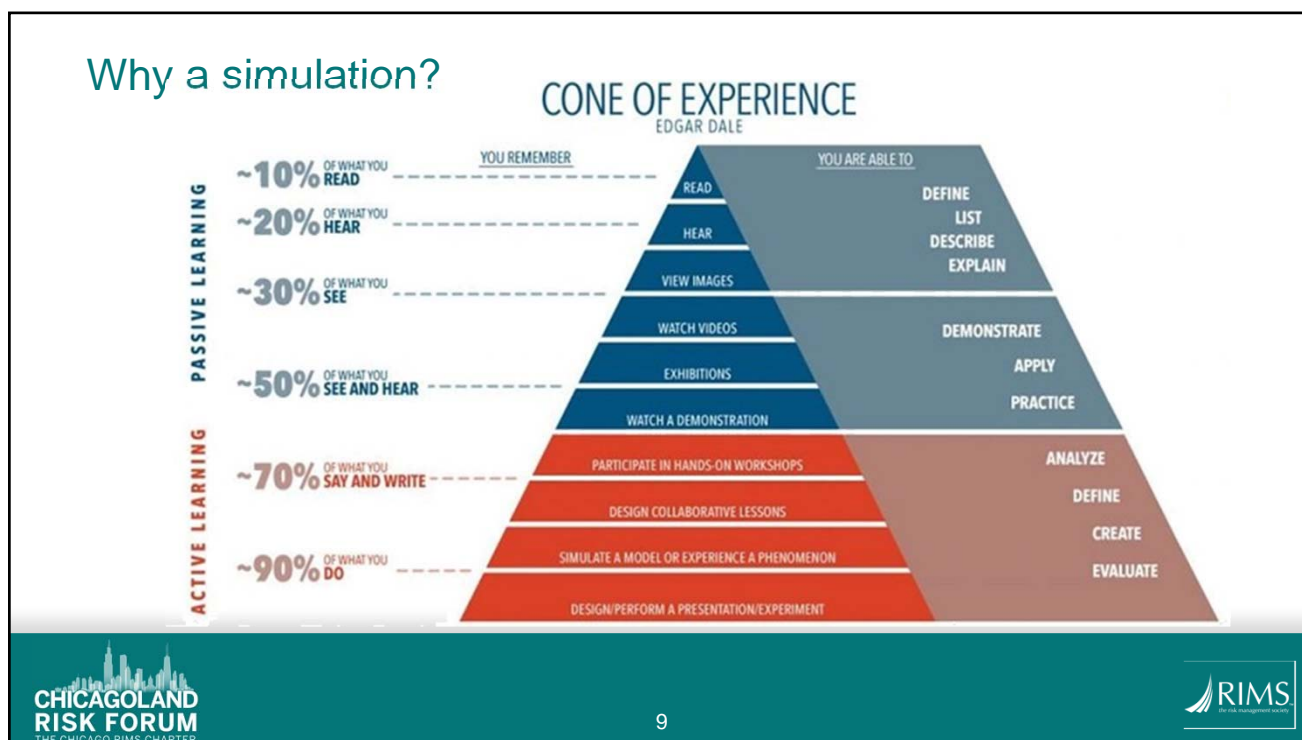
## Challenges faced with training programs

- Identifying the appropriate audience
- Connecting to the appropriate audience
- Employee turnover
- Loss control standards change

## Tips for success with training implementation

- Be inclusive
- Utilize multiple delivery forums to deliver
- Incorporate with onboarding
- Keep it real or pertinent

## Why a simulation?



## 10 Qualities of a Resilient Property

- Commitment to property loss prevention
- Suitable construction
- Sprinklers where needed
- Special hazards protection
- Adequate water supply
- Ongoing fire protection programs
- Good housekeeping
- Maintenance of buildings and equipment
- Emergency response team and public fire service
- Natural hazards protection

## Tips for effective loss prevention learning strategies

- Incorporate within onboarding process
- Provide just-in-time learning opportunities
- Reinforce learning on the job
- Define audiences and create resources for each audience (learner, managers, site management)
- Provide templated communication to local level
- Make it real, illustrate how “they” can prevent a loss and the business impact on them
- Consider the cone of experience